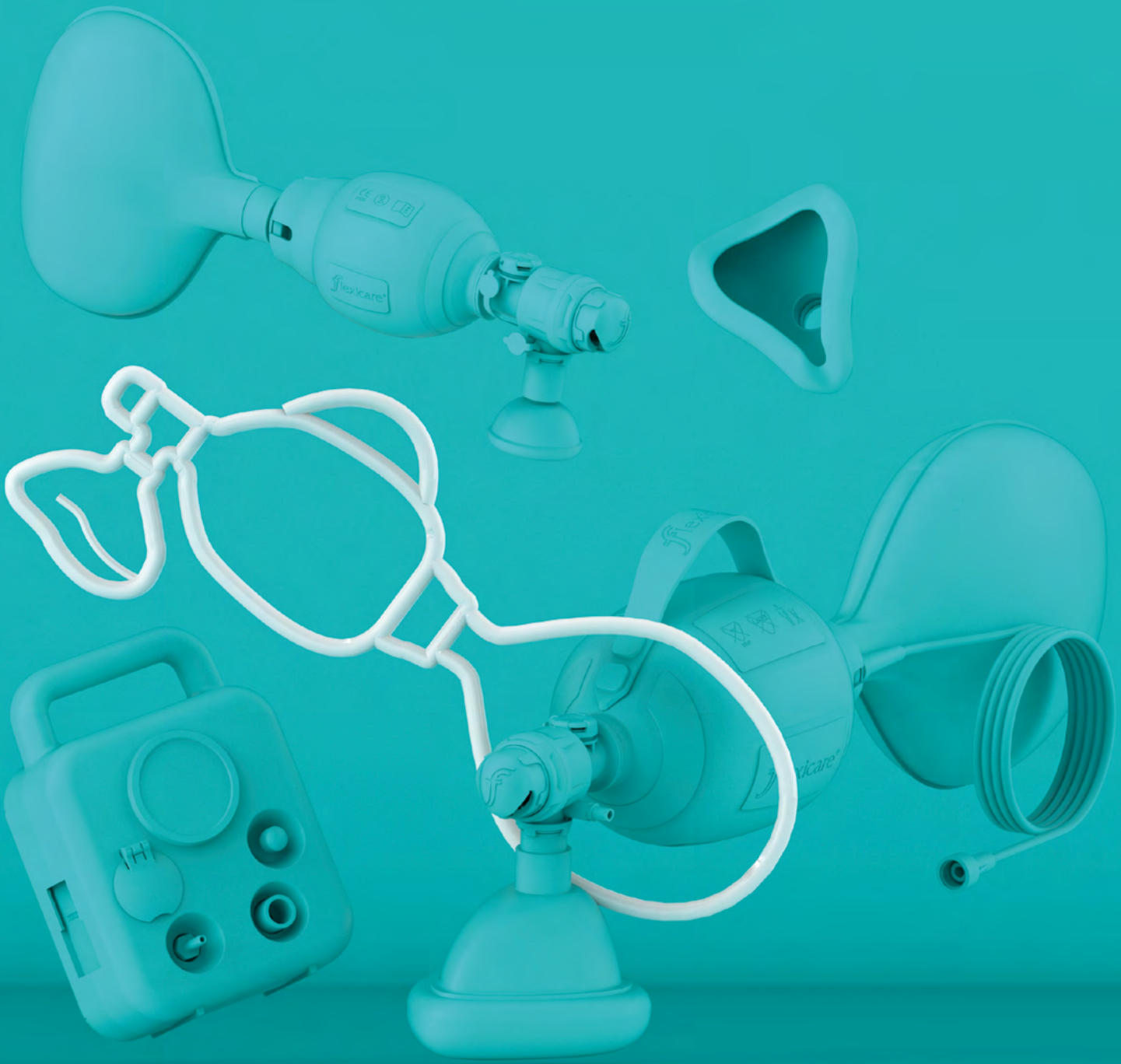




**flexicare**<sup>®</sup>  
TOTAL QUALITY - TOTAL CARE

---

**resuscitation**  
product catalogue



# RESUSCITATION

---



# Single-Use Manual Resuscitators

Ergonomic, single-use Manual Resuscitators with higher levels of Oxygen delivery and pre-fitted components in quick-to-open packaging, provide fast effective care, even in the most difficult situations.

- + Single use
- + Latex free
- + DEHP free



Available with a range of ports and optional accessories.

SCAN HERE



3D VIEW



## CO<sub>2</sub> Monitoring Port

Located close to the patient airway for a maximum capnography trace accuracy and reliability. The capless self-sealing port eliminates gas leak risk when not in use.



## MDI Port

Angled MDI port directs medication into patient airway, maximising effectiveness and reducing waste.



## Optional Manometer

Available in-pack or as a separate item, the single-use manometer gives a breath-by-breath read-out of delivered pressures.



## Optional Adjustable PEEP Valve

Adjustable from 5 - 20cmH<sub>2</sub>O, the PEEP valve fits in place of deflector cap without the need to remove the mask or interrupt ventilation.



### Grip & Control

Textured surface and optional strap gives grip and control of the ambidextrous bag, even when wearing gloves and in wet conditions.



### Lightweight Construction

Low resistance valves and fast recoil non-PVC bag reduce user fatigue, even during lengthy ventilations.



### Immediate Ventilation

Quick-to-open packaging and pre-fitted mask minimise set up time. Additional devices can be fitted without removing the Resuscitator from the patient.

### Optional Strap

Facilitating single handed bag use, the adult bag strap frees the other hand to secure the mask or airway device. Double handed compression possible if required.

### Clear Valve Assembly

Unrestricted view of correct valve function, and reduced bulk so the user can verify mask or airway position and observe the patient.

### Colour Coded Pressure Relief Valve

Located centrally, the Pressure Relief Valve can be operated by either hand and the setting is visible from both sides and above.

### Double Swivel Patient-End Connector

The Valve Assembly rotates 360° in two axes for an effective mask seal and bag position, whatever the approach angle.

### Tamper-evident Packaging

Sealed in a clear carry bag for convenient storage. Tear-off strip assures contents are uncontaminated. Resealable after use for safe disposal of contaminated items.

### Textured Reservoir Bag

The non-stick textured inner surface ensures complete inflation and correct bag function.

PART	DESCRIPTION	+ PRESSURE RELIEF VALVE	+ ETCO <sub>2</sub> , MDI & MANOMETER PORTS	+ ACCESSORY	MASK SIZE	QTY
038-71-940	Adult Single-Use Resuscitator with Strap	60cmH <sub>2</sub> O	✓		5	5
038-71-941	Adult Single-Use Resuscitator with Strap	60cmH <sub>2</sub> O	✓	Manometer	5	5
038-71-942	Adult Single-Use Resuscitator with Strap	60cmH <sub>2</sub> O	✓	PEEP Valve	5	5
038-71-943	Adult Single-Use Resuscitator with Strap				5	5
038-71-944	Adult Single-Use Resuscitator without Strap				5	5
038-71-945	Adult Single-Use Resuscitator with Strap	40cmH <sub>2</sub> O	✓		5	5
038-72-940	Paediatric Single-Use Resuscitator	40cmH <sub>2</sub> O	✓		2 + 1	5
038-72-941	Paediatric Single-Use Resuscitator	40cmH <sub>2</sub> O	✓	Manometer	2 + 1	5
038-72-942	Paediatric Single-Use Resuscitator	40cmH <sub>2</sub> O	✓	PEEP Valve	2 + 1	5
038-72-946	Paediatric Single-Use Resuscitator	40cmH <sub>2</sub> O	✓		3	5
038-73-940	Infant Single-Use Resuscitator	40cmH <sub>2</sub> O	✓		1 + 0	5
038-73-941	Infant Single-Use Resuscitator	40cmH <sub>2</sub> O	✓	Manometer	1 + 0	5
038-73-942	Infant Single-Use Resuscitator	40cmH <sub>2</sub> O	✓	PEEP Valve	1 + 0	5
038-71-966	Single-Use Resuscitator Manometer					5
038-71-969	Adjustable PEEP Valve 5-20cmH <sub>2</sub> O					5



# Reusable Manual Resuscitators

Manufactured from high quality materials that can be autoclaved up to 50 cycles. The range, design and performance characteristics mirrors those of our single-use resuscitators.

Available with a range of ports and optional accessories.



## MDI Port

The MDI port is angled to direct medication into the airway, maximising effectiveness and reducing waste.



## Optional Manometer

Attaching the single-use manometer gives breath-by-breath indication of delivered pressures.



## Optional Adjustable PEEP Valve

Adjustable from 5 - 20cmH2O, the PEEP valve replaces the deflector cap without the need to remove the mask or interrupt ventilation.

## Optional Strap

Facilitating single handed bag use, the adult bag strap frees the other hand to secure the mask or airway device. Double handed compression possible if required.

## Colour Coded Pressure Relief Valve

Located centrally, the Pressure Relief Valve can be operated by either hand and the setting is visible from both sides and above.

## Tamper-evident Packaging

Sealed in a clear carry bag for convenient storage. Tear-off strip assures contents are uncontaminated. Resealable after use for safe disposal of contaminated items.

## Clear Valve Assembly

Unrestricted view of correct valve function, and reduced bulk so the user can verify mask or airway position and observe the patient.

## Double Swivel Patient-End Connector

The Valve Assembly rotates 360° in two axes for an effective mask seal and bag position, whatever the approach angle.

## Textured Reservoir Bag

The non-stick textured inner surface ensures complete inflation and correct bag function.

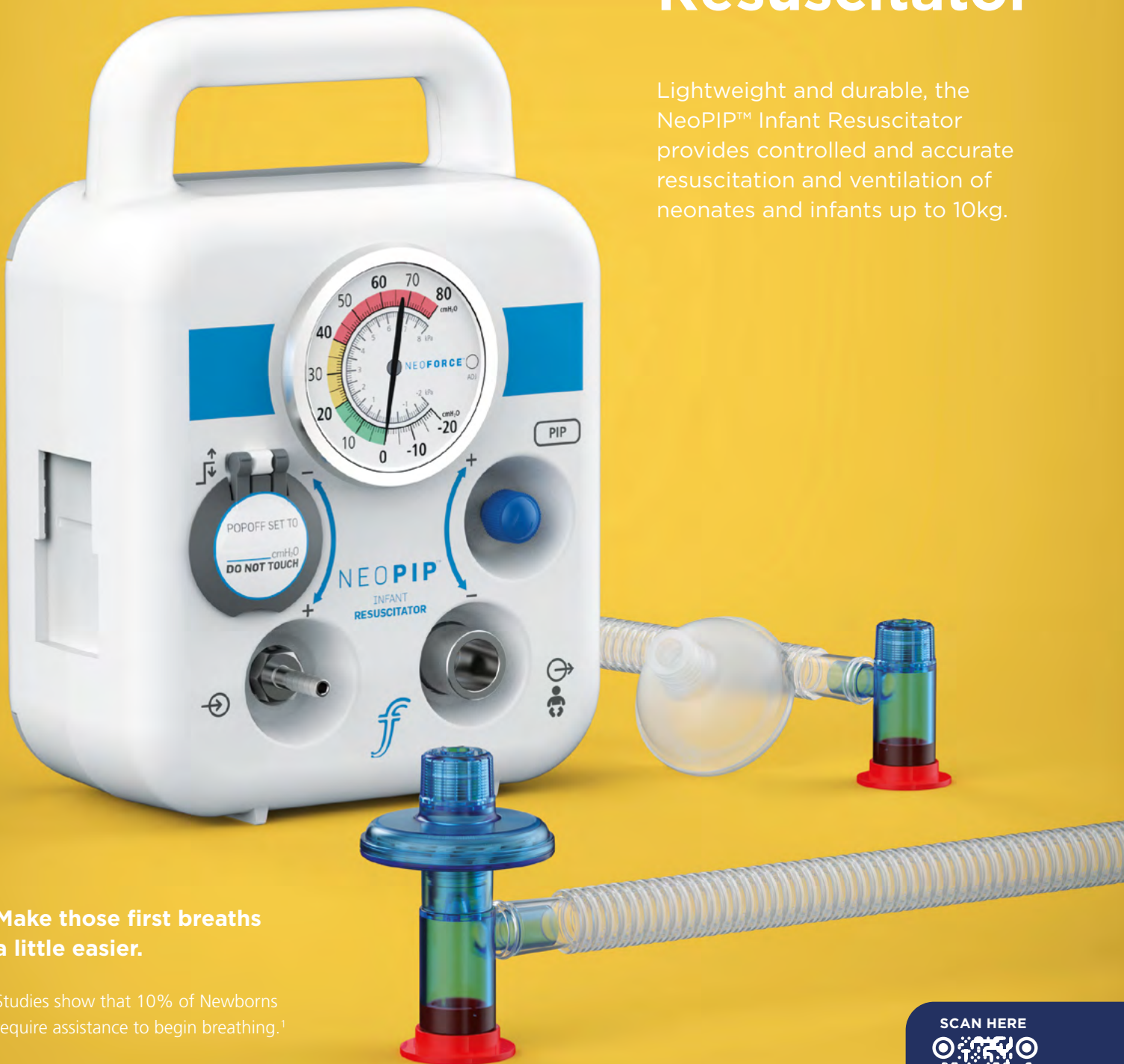
PART	DESCRIPTION	+ PRESSURE RELIEF VALVE	+ ET/CO <sub>2</sub> MDI & MANOMETER PORTS	+ ACCESSORY	MASK SIZE	QTY
038-71-950	Adult Reusable Resuscitator	60cmH <sub>2</sub> O	✓		5	5
038-71-951	Adult Reusable Resuscitator	60cmH <sub>2</sub> O	✓	Manometer	5	5
038-71-952	Adult Reusable Resuscitator	60cmH <sub>2</sub> O	✓	PEEP Valve	5	5
038-71-953	Adult Reusable Resuscitator				5	5
038-71-970	Adult Reusable Resuscitator	60cmH <sub>2</sub> O	✓	Storage / Carry Case	5	1
038-72-950	Paediatric Reusable Resuscitator	40cmH <sub>2</sub> O	✓		3	5
038-72-951	Paediatric Reusable Resuscitator	40cmH <sub>2</sub> O	✓	Manometer	3	5
038-72-952	Paediatric Reusable Resuscitator	40cmH <sub>2</sub> O	✓	PEEP Valve	3	5
038-72-956	Paediatric Reusable Resuscitator	40cmH <sub>2</sub> O	✓		2	5
038-72-970	Paediatric Reusable Resuscitator	40cmH <sub>2</sub> O	✓	Storage / Carry Case	3 + 2	1
038-73-950	Infant Reusable Resuscitator	40cmH <sub>2</sub> O	✓		1 + 0	5
038-73-951	Infant Reusable Resuscitator	40cmH <sub>2</sub> O	✓	Manometer	1 + 0	5
038-73-952	Infant Reusable Resuscitator	40cmH <sub>2</sub> O	✓	PEEP Valve	1 + 0	5
038-73-970	Infant Reusable Resuscitator	40cmH <sub>2</sub> O	✓	Storage / Carry Case	1 + 0	1

## Replacement Parts

PART	DESCRIPTION	TYPE	QTY
038-71-960	Resuscitator Replacement Patient End Assembly without Pressure Relief Valve	Reusable	5
038-71-961	Resuscitator Replacement Patient End Assembly with Pressure Relief Valve 60cmH <sub>2</sub> O	Reusable	5
038-71-962	Resuscitator Replacement Patient End Assembly with Pressure Relief Valve 40cmH <sub>2</sub> O	Reusable	5
038-71-965	Resuscitator Intake End Valve Assembly	Reusable	5
038-71-964	PEEP Valve - Adjustable 5 to 20cmH <sub>2</sub> O	Reusable	5
038-71-857	Adult / Paediatric Resuscitator Reservoir Bag with 3m O <sub>2</sub> Tube	Single-use	10
038-73-857	Infant Resuscitator Reservoir Bag with 3m O <sub>2</sub> Tube	Single-use	10
038-71-966	Resuscitator Manometer	Single-use	5

# NeoPIP™ Infant Resuscitator

Lightweight and durable, the NeoPIP™ Infant Resuscitator provides controlled and accurate resuscitation and ventilation of neonates and infants up to 10kg.



**Make those first breaths  
a little easier.**

Studies show that 10% of Newborns require assistance to begin breathing.<sup>1</sup>

SCAN HERE



3D VIEW

<sup>1</sup> American Heart Association, Guidelines for cardiopulmonary resuscitation (CPR) and emergency cardiovascular care Part 15: Neonatal Resuscitation 2010 (2010) Circulation 122: S909-19



## Accurate Pressure Management

The NeoPIP Infant Resuscitator, delivers safe and precise ventilation at a touch for our most vulnerable patients.



### Large Manometer

Large easy-to-read dial aids set-up and clearly shows delivered pressures during use.



### Adjustable Controls

NeoPIP's adjustable maximum pressure relief (pop-off) valve and Peak Inspiratory Pressure (PIP) controls quickly and safely set the required levels.



### Universal Mounting Bracket

Can be mounted on vertical or horizontal Vacuum Brackets, IV Poles, or DIN or Dovetail Rail Systems.

### Precise Pressures

Safe and consistent Peak Inspiratory Pressure (PIP) can be delivered for every breath with controlled delivery.

### Accurate Delivery

Used with a blender and flow meter, NeoPIP™ delivers accurate oxygen concentrations of up to 100%, with flow rates of up to 15L/min.

### Lung Protective Delivery

Provides consistent, controlled resuscitation breaths to help prevent over-distension of the lung.

### Durable and Dependable

High quality, durable aluminum casing with recessed metal fittings in sleek design.

### Secure Connection

NeoPIP™ has a metal gas inlet which connects securely to standard oxygen tubing.

### Universal Connection

Standard 15mm Female Connector accepts standard Infant Resuscitator T-Piece Circuits without the need for an adapter.

PART	DESCRIPTION	QTY
NF-100	NeoPIP™ Infant Resuscitator	1
NF-101	NeoPIP™ Universal Mounting Bracket	1

# Single-Use Resuscitator T-Piece Circuits



For manually controlled ventilation and resuscitation of neonates and infants. Suitable for use in Labour and Delivery Units, NICU and Infant Transport.

## Precise PEEP

Easy-to-adjust PEEP control valve rotates to set the exact pressure and remains constant during prolonged use.

## Accurate Reliable Delivery

Low compliance tubing with shallow corrugations for minimal flow resistance and accurate pressure delivery.

## Small, Coloured T-Piece Design

Blue T-Piece colouring makes the circuit easily visible at the bed side, the shortened length decreases the deadspace while making it easier to hold.

## Controlled Oxygenation

Finger/thumb port to control inspiration and expiration, by placing the thumb/finger over the port to deliver 21% - 100% or free-flow oxygen.

## Device Connectivity

The universal connector fits seamlessly with all popular resuscitation units without the need for an adapter.

## Optional Filter

Adds 99.99% bacterial and 99.9% viral protection.

PART	DESCRIPTION	QTY
NF-150	Infant Resuscitator T-Piece Circuit 1.9m with Adjustable PEEP	20
NF-180	Infant Resuscitator T-Piece Circuit 1.9m with Adjustable PEEP and Filter	20

## Circuit Kits

PART	DESCRIPTION	QTY
NF-056	Infant Resuscitation Kit T-Piece Circuit 1.9m (75") Oxygen Line 2.1m (82") Catheter Access Adapter	10
NF-086	Infant Resus Kit T-Piece Circuit 1.8m (70") with Filter O2 Line 2.1m (82") Catheter Adapter	10
NF-155	Infant Resuscitation Kit T-Piece Circuit 1.9m (75") Oxygen Line 2.1m (82") Round Masks Sizes 0 + 1	10
NF-155-NT	Infant Resuscitation Kit T-Piece Circuit 1.9m (75") with Round Masks Sizes 0 + 1	10
NF-156	Infant Resuscitation Kit T-Piece Circuit 1.9m (75") Oxygen Line 2.1m (82") Anatomical Masks 0 + 1	10
NF-156-NT	Infant Resuscitation Kit T-Piece Circuit 1.9m (75") with Anatomical Masks Sizes 0 + 1	10
NF-157	Infant Resuscitation Kit T-Piece Circuit 1.9m (75") with Anatomical Mask Size 1	10
NF-157-0	Infant Resuscitation Kit T-Piece Circuit 1.9m (75") Oxygen Line 2.1m (82") Anatomical Mask Size 0	10
NF-157-1	Infant Resuscitation Kit T-Piece Circuit 1.9m (75") Oxygen Line 2.1m (82") Anatomical Mask Size 1	10
NF-158-0	Infant Resuscitation Kit T-Piece Circuit 1.9m (75") Oxygen Line 2.1m (82") and Round Mask Size 0	10
NF-158-1	Infant Resuscitation Kit T-Piece Circuit 1.9m (75") Oxygen Line 2.1m (82") and Round Mask Size 1	10
NF-055-10	Infant Resuscitator T-Piece Catheter Access Adapter	10

# Infant Resuscitation Face Masks

Made with soft, clear material for improved patient monitoring and the ability to form an effective seal, the single-use infant mask provides optimal ventilation during resuscitation.



PART	DESCRIPTION	QTY
NF-160-10	Resuscitation Face Mask Single Use Round Silicone Neonatal Size 0	10
NF-161-10	Resuscitation Face Mask Single Use Round Silicone Infant Size 1	10
NF-170-10	Resuscitation Face Mask Single Use Anatomical with Pre-Inflated Cushion Neonatal Size 0	10
NF-171-10	Resuscitation Face Mask Single Use Anatomical with Pre-Inflated Cushion Infant Size 1	10

# Pocket Resuscitation Mask

Mouth to mask ventilation for non-breathing patients. The mask features a pre-filled cushion to provide maximum seal and includes an integrated bacterial/viral filter to protect both user and patient.



## Durable Carry Case

Protects the mask until required - easy open release catch to minimise any delay.

## Oxygen Port with Cap

Port for delivery of supplemental oxygen. Avoids the need to change mask during transportation.

## Non-return Valve

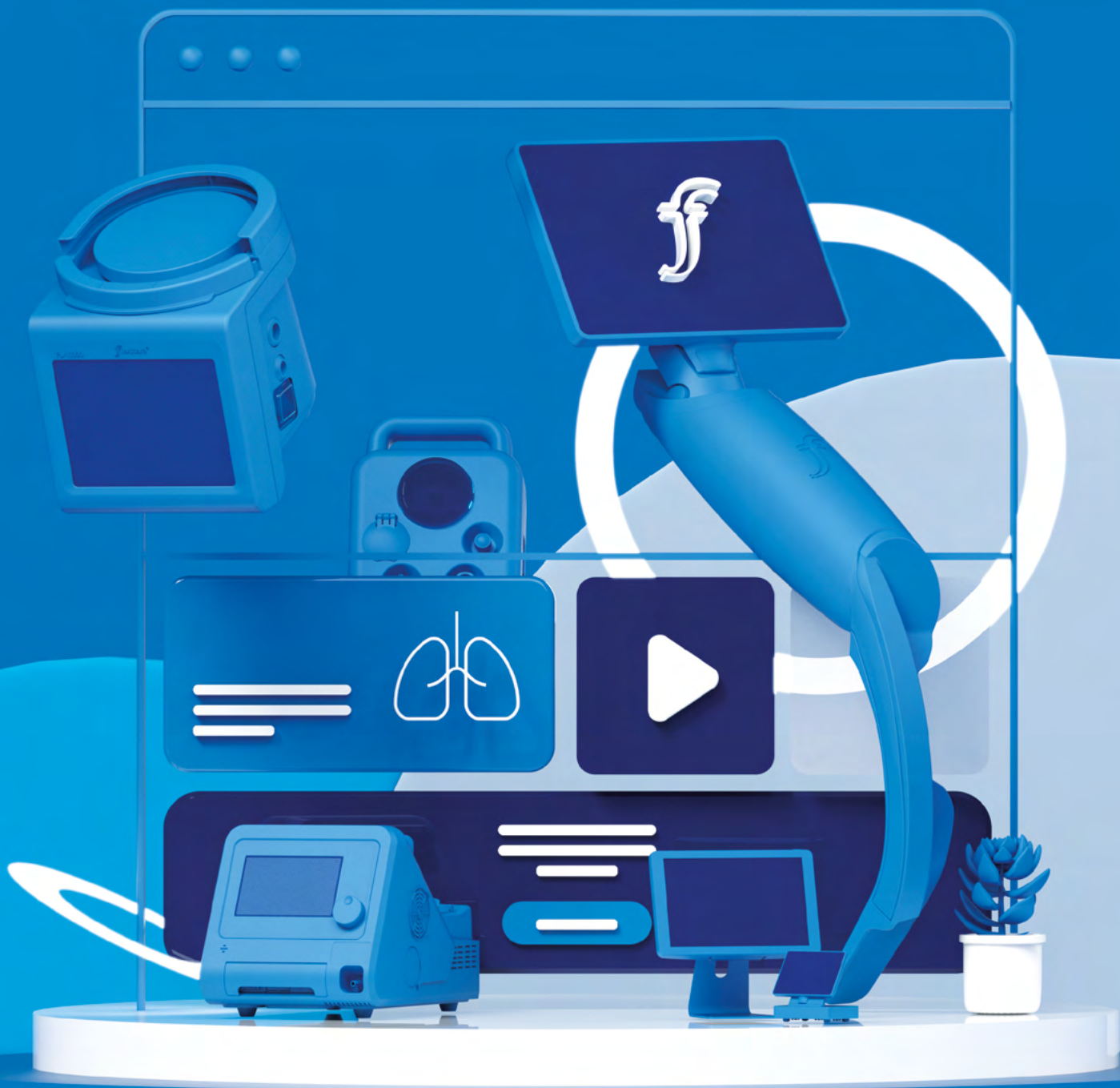
One-way valve prevents vomit or other body fluids reaching the user, but allows exhaled breath to escape.

+ Pre-filled cushion

+ BVM Compatible

+ Universal patient size

PART	DESCRIPTION	QTY
010-999	Pocket Resuscitation First Aid Mask	20



---

Discover more online. Visit our website for the very latest product releases, instructional videos, company news, event information and downloadable resources.

Subscribe to our social media channels to join the conversation and share your stories.

**[www.flexicare.com](http://www.flexicare.com)**



**Flexicare Group Limited**

Cynon Valley Business Park • Mountain Ash • CF45 4ER • UK  
+44 (0)1443 474647 • [enquiries@flexicare.com](mailto:enquiries@flexicare.com)

[www.flexicare.com](http://www.flexicare.com)

FC7087A | 112022