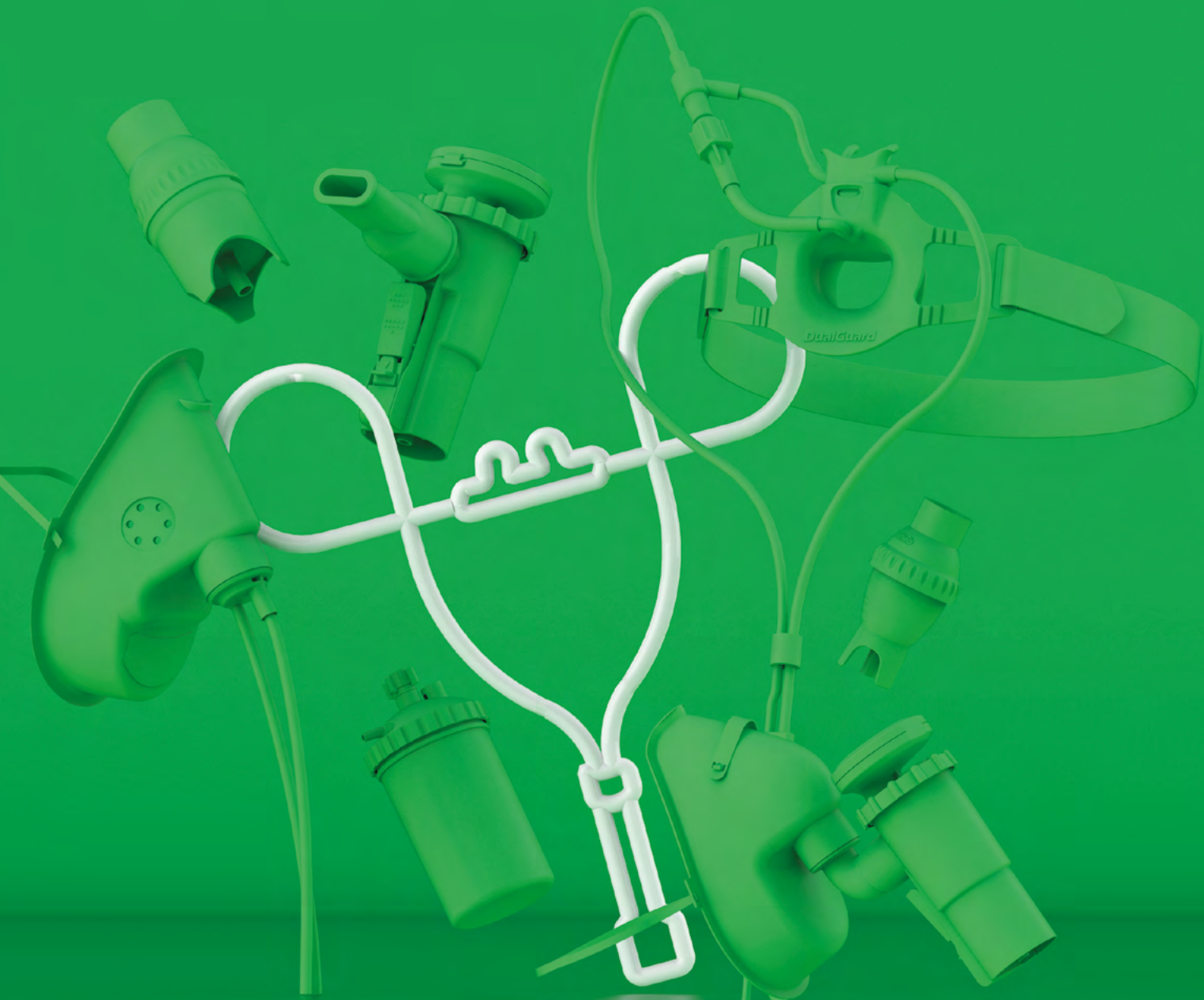


**flexicare**<sup>®</sup>  
TOTAL QUALITY - TOTAL CARE

---

**oxygen and aerosol therapy**  
product catalogue



# OXYGEN & AEROSOL THERAPY

---

## **ETCO<sub>2</sub> MONITORING**

---

- 106** DUAL MASK
- 107** DUAL NASAL CANNULA
- 108** DUALGUARD
- 109** EASYGUARD
- 109** CAPNOCARE
- 109** DISC FILTERS

## **FIXED CONCENTRATION**

---

- VENTIMASK **110**
- AEROSOL MASK **111**
- VENTURI FIXED CONCENTRATION MASK SETS **111**
- VENTURI BARRELS **111**

## **VARIABLE CONCENTRATION**

---

- 112** MEDIUM CONCENTRATION MASKS
- 113** NASAL CANNULAS
- 114** NON-REBREATHING MASKS
- 114** TRACHEOSTOMY MASKS

## **ACCESSORIES**

---

- BUBBLE HUMIDIFIER **115**
- OXYGEN TUBING CONNECTORS **115**
- OXYGEN TUBING **115**

## **NEBULISERS**

---

- 116** MAXINEB DUO
- 117** MAXINEB 90
- 117** MAXINEB

# Dual

Dual Masks and Nasal Cannulas simultaneously deliver supplementary oxygen and enable EtCO<sub>2</sub> monitoring when using a sidestream or Microstream™ capnometer.

Guidelines<sup>1-7</sup> require EtCO<sub>2</sub> monitoring of all moderately or deeply sedated patients, for patients being recovered from anaesthesia or moderate or deep sedation, and during CPR to monitor ET tube placement, efficacy of chest compressions and early indication of return of spontaneous circulation.



END-TIDAL CO<sub>2</sub> MONITORING & O<sub>2</sub> DELIVERY

## Delivering accuracy with every breath

Dual Mask has been proven to be the most efficient in sampling end tidal CO<sub>2</sub> in an independent comparative study<sup>8</sup> in a simulated patient.

### Easy Fit with Good Seal

The soft, pliable mask moulds easily to the patient's face, with a feathered-edge rim for maximum comfort.

### Comfort and Security

Oxygen tubing and monitoring line are lightly bonded together, but can be separated to reach the flow meter and capnometer, minimising clutter around the patient.

### Patient Comfort

Soft Touch tubing reduces friction for increased comfort over the ears and across the face.

Male Luer



Female Luer



Microstream™ Compatible Luer



<sup>1</sup> European Section and Board of Anaesthesiology UEMS. EBA Recommendation for the use of Capnography. 2011

<sup>2</sup> Royal College of Anaesthetists (RCoA). Guidelines for the Provision of Anaesthetic Services. 2013

<sup>3</sup> AAGBI Safety Statement May. 2011

<sup>4</sup> AAGBI Safety Guidelines. Immediate Post-anaesthesia Recovery. 2013

<sup>5</sup> American Society of Anesthesiologists (ASA). Standards for Basic Anesthetic Monitoring. 2011

<sup>6</sup> European Resuscitation Council Guidelines for Resuscitation. 2010

<sup>7</sup> Resuscitation Council UK. Guidelines for Resuscitation. 2015

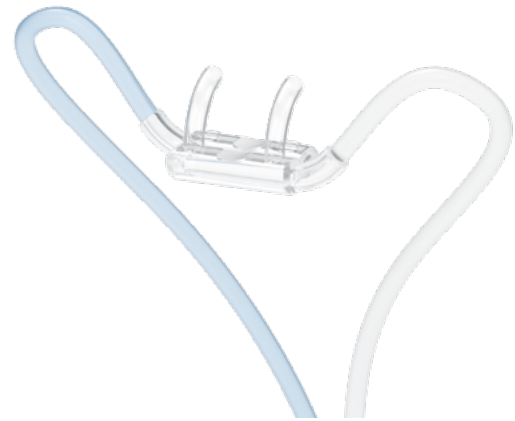
<sup>8</sup> Wales Anaesthesia Innovation. Cardiff University. 2011



## Dual Mask

Dual Mask provides continual monitoring of carbon dioxide exhaled from both mouth and nose whilst delivering supplementary oxygen.

Pre-fitted oxygen and sampling lines makes set-up quick and easy.



## Dual Nasal Cannula

Oxygen is delivered to both nostrils via the lower ports and EtCO<sub>2</sub> is sampled from both nostrils for sidestream or Microstream™ CO<sub>2</sub> monitoring through the upper prongs.

During exhalation, oxygen flow is diverted away for an accurate and reliable capnography trace.

MALE LUER	FEMALE LUER	MALE LUER + FILTER	FEMALE LUER + FILTER	MICROSTREAM COMPATIBLE LUER + FILTER		TUBING	QTY
032-10-131	032-10-130	032-10-133	032-10-132	032-10-190	Adult Dual Mask	2.1m	50
		032-10-133A	032-10-132A	032-10-191	Adult Dual Mask	3.0m	50
032-10-135	032-10-134	032-10-137	032-10-136		Adult Dual Mask with Nose Clip	2.1m	50
032-10-139	032-10-138	032-10-141	032-10-140	032-10-192	Small Adult Dual Mask	2.1m	50
032-12-143	032-12-142	032-12-145	032-12-144	032-12-190	Paediatric Dual Mask	2.1m	50
				032-12-191	Paediatric Dual Mask	3.0m	50

MALE LUER	FEMALE LUER	MALE LUER + FILTER	FEMALE LUER + FILTER	MICROSTREAM COMPATIBLE LUER + FILTER		TUBING	QTY
032-10-125	032-10-126	032-10-125A	032-10-126A	032-10-182	Adult Dual Nasal Cannula	2.1m	25
032-10-127	032-10-128	032-10-127A	032-10-128A	032-10-183	Adult Dual Nasal Cannula	3.0m	25
032-12-125	032-12-126	032-12-125A	032-12-126A	032-12-182	Paediatric Dual Nasal Cannula	2.1m	25
				032-12-183	Paediatric Dual Nasal Cannula	3.0m	25
032-13-125	032-13-126	032-13-125A		032-13-182	Neonatal Dual Nasal Cannula	2.1m	25
				032-10-180	Adult Dual Oral Nasal Cannula	2.1m	25
032-10-195	032-10-193	032-10-196	032-10-194	032-10-181	Adult Dual Oral Nasal Cannula	3.0m	25

# DualGuard™

DualGuard delivers reliable O<sub>2</sub> delivery and monitors CO<sub>2</sub> from both the mouth and nose simultaneously, improving patient safety while fulfilling regulatory guidelines.



SCAN HERE



3D VIEW



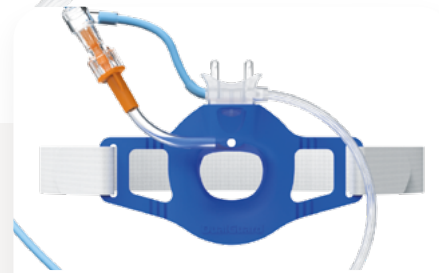
## Protection for Patient and Equipment

The Comfort Rest Bite Block fits securely and comfortably in the mouth, protecting both the patient's teeth and endoscopy equipment.



## Care from Procedure to Recovery

Detachable Dual Nasal Cannula can be used for pre-procedure oxygenation or to continue delivering O<sub>2</sub> and monitor CO<sub>2</sub> post-procedure in recovery without need for additional devices.



## All-In-One Kit

DualGuard incorporates: a Comfort Rest Bite Block, Detachable Dual Nasal Cannula, LuerSafe Oral Monitoring Line, O<sub>2</sub> Tubing, and Adjustable Head Strap in one complete kit.

PART	DESCRIPTION	QTY
032-10-825	DualGuard Endoscopy Mouthpiece Adult 2m Combined O <sub>2</sub> Delivery/CO <sub>2</sub> Monitoring Male Luer	25
032-10-845	DualGuard Endoscopy Mouthpiece Adult 4m Combined O <sub>2</sub> Delivery/CO <sub>2</sub> Monitoring Male Luer	25
032-10-850	DualGuard Endoscopy Mouthpiece Adult 3m Combined O <sub>2</sub> Delivery/CO <sub>2</sub> Monitoring Female Luer	25
032-10-855	DualGuard Endoscopy Mouthpiece Adult 3m Combined O <sub>2</sub> Delivery/CO <sub>2</sub> Monitoring Male Luer	25
032-10-860	DualGuard Endoscopy Mouthpiece Adult 3m Combined O <sub>2</sub> Delivery/CO <sub>2</sub> Monitoring Filter with Female Luer	25
032-10-865	DualGuard Endoscopy Mouthpiece Adult 3m Combined O <sub>2</sub> Delivery/CO <sub>2</sub> Monitoring Filter with Male Luer	25
032-10-868	DualGuard Endoscopy Mouthpiece Adult 3m Combined O <sub>2</sub> Delivery/CO <sub>2</sub> Monitoring Filter with Luer Slip	25
032-10-870	DualGuard Adult Endoscopy Mouthpiece 4.25m O <sub>2</sub> Delivery/CO <sub>2</sub> Monitoring, Filter, Microstream Type Luer	25



## EasyGuard

Features the Comfort Rest Bite Block (60Fr) with an adjustable strap, offering superior patient comfort while maintaining accessibility for endoscopic procedures.

- + Feature text
- + Feature text

PART	DESCRIPTION	QTY
032-10-800	EasyGuard	25

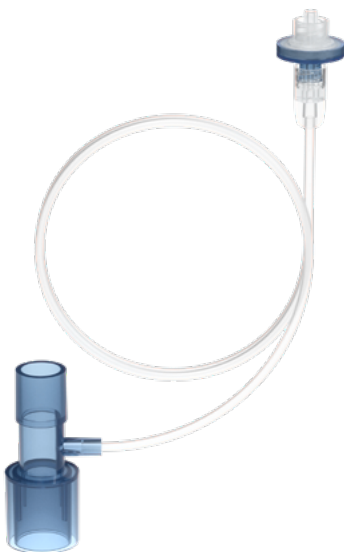


## Disc Filters

Hydrophobic Disc Filters protect the monitor from moisture during CO<sub>2</sub> monitoring.

- + Feature text
- + Feature text

PART	DESCRIPTION	QTY
010-740	Luer Lock Disc Filter with Luer Lock	50
010-741	Luer Slip Disc Filter with Slip Luer	50



## CapnoCare™

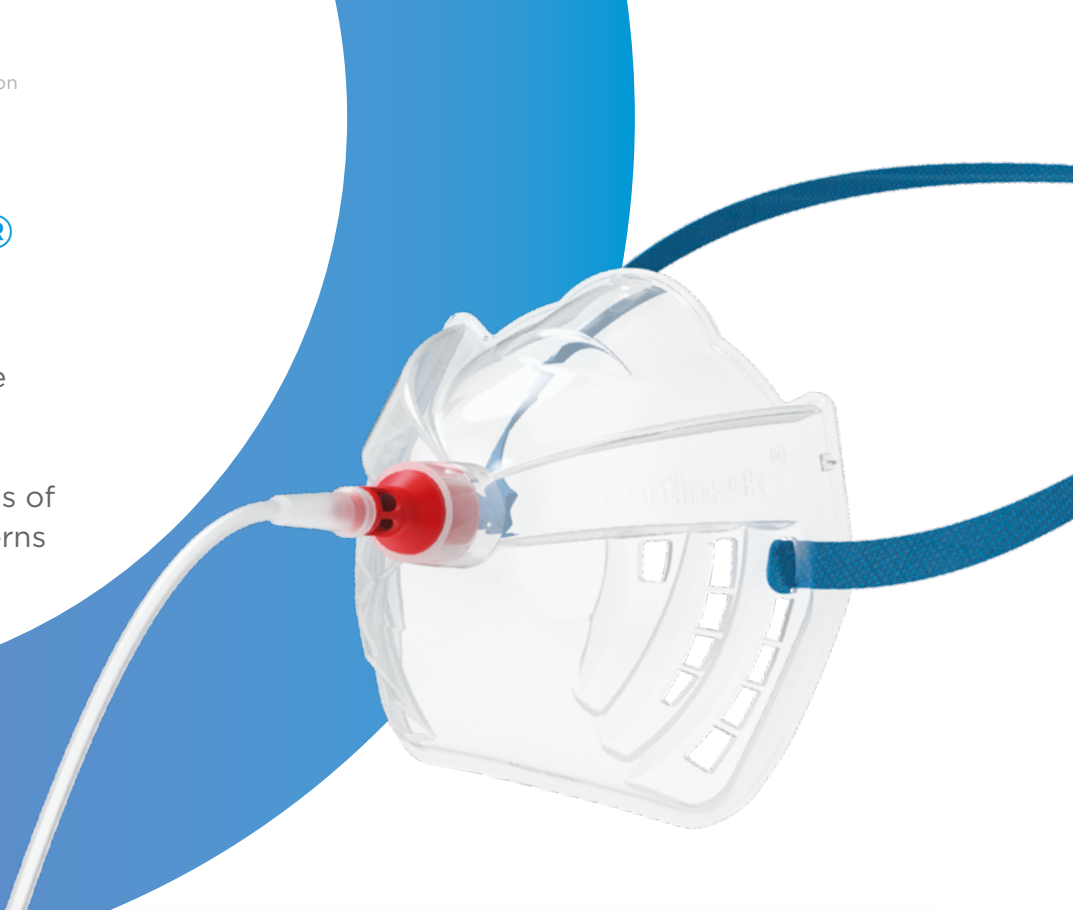
CapnoCare™ samples EtCO<sub>2</sub> during critical situations and can be used with a resuscitation bag for intubated patients, a laryngeal mask, or an anaesthesia face mask.

- + Hydrophobic Filter
- + Improves accessibility

PART	DESCRIPTION	QTY
010-750	CapnoCare Capnography Connector with 3m line & Male Luer Filter	10
010-755	CapnoCare Capnography Connector with 3m line & Female Luer Filter	10
010-760	CapnoCare Capnography Connector with 3m line & Luer Slip Filter	10

# VentiMask®

Clinically proven that “only the Ventimask is able to provide a fixed and predictable oxygen concentration under conditions of the changing ventilatory patterns found in clinical practice.”<sup>1</sup>



## Venturi Barrels

A choice of 6 Venturi barrels to provide a fixed concentration of oxygen offers a convenient and cost effective option to meet the individual patient’s requirements.

## Large Capacity

Large 280ml capacity acts as an oxygen reservoir and maximises accuracy. Also reduces any feeling of claustrophobia, improving therapy compliance.

## Exhalation Vents

The number and position of the vents enhance CO<sub>2</sub> washout and prevent pressure build-up in the mask.

## Soft and Flexible

The masks seals comfortably to the face without pressure points. Horizontal Gas Flow minimises irritation and drying of the eyes.

PART	DESCRIPTION	MINIMUM FLOW RATE LPM	VENTURI COLOUR	QTY
037-10-001	Ventimask with 24% Venturi	2	●	50
037-10-002	Ventimask with 28% Venturi	4	○	50
037-10-010	Ventimask with 31% Venturi	6	●	50
037-10-003	Ventimask with 35% Venturi	8	●	50
037-10-004	Ventimask with 40% Venturi	10	●	50
037-10-005	Ventimask with 60% Venturi	15	●	50
037-10-006	Ventimask with 28% Venturi in situ (for Home Use)	2	○	50
037-10-007	Ventimask without Venturi Barrel			40

PART	DESCRIPTION	VENTURI COLOUR	QTY
037-10-008	Ventimask Low O <sub>2</sub> Concentration Set with 24%, 28%, 31% & 35% Venturies	● ○ ● ●	50
037-10-009	Ventimask High O <sub>2</sub> Concentration Set with 40% & 60% Venturies	● ●	50
037-10-012	Ventimask with 6 Venturies 24%, 28%, 31%, 35%, 40% & 60%	● ○ ● ● ● ●	40

<sup>1</sup> Fixed performance oxygen masks. Hypoxic hazard of low-capacity designs. D Cox & C Gillbe. Anaesthesia, 1981, Volume 36, pages 958-964



## Aerosol & Venturi Masks

Soft, comfortable masks that fit to the face with an excellent seal and have the versatility to deliver either oxygen therapy or aerosolised drugs via a nebuliser.



### Aerosol Face Masks

ADULT	PAEDIATRIC	DESCRIPTION	QTY
032-10-006	032-10-010	Aerosol Face Mask	50
032-10-006A		Aerosol Face Mask with Swivel Oxygen Reducer and 2.1m Oxygen Tubing	50
032-10-006ANC		Aerosol Face Mask with Nose Clip and Oxygen Reducer and 2.1m Oxygen Tubing	50
032-10-006BV	032-10-010BV	Aerosol Face Mask with Blank Venturi and 2.1m Oxygen Tubing	50
032-10-006NC		Aerosol Face Mask with Nose Clip	50
032-10-006NCBV		Aerosol Face Mask with Nose Clip with Blank Venturi and 2.1m Oxygen Tubing	50
032-10-006SM		Small Adult Aerosol Face Mask	50

### Venturi Fixed Concentration Mask Sets

ADULT	DESCRIPTION	VENTURI COLOUR	QTY
032-10-024	Venturi Fixed Concentration Mask Set	● ○ ● ● ● ● ● ●	50
032-10-025	Venturi Fixed Concentration Mask Set + 2.1m O <sub>2</sub> Tube	● ○ ● ● ● ● ● ●	50
032-10-025NC	Venturi Fixed Concentration Mask Set with Nose Clip + 2.1m O <sub>2</sub> Tube	● ○ ● ● ● ● ● ●	50
032-10-026	Venturi Fixed Concentration Mask Set	● ● ● ● ● ● ● ●	50
032-10-027	Venturi Fixed Concentration Mask Set + 2.1m O <sub>2</sub> Tube	● ● ● ● ● ● ● ●	50
032-10-028	Venturi Fixed Concentration Mask Set	● ○ ● ● ● ● ● ●	50
032-10-028NC	Venturi Fixed Concentration Mask Set with Nose Clip	● ○ ● ● ● ● ● ●	50
032-10-028T	Venturi Fixed Concentration Mask Set + 2.1m O <sub>2</sub> Tube	● ○ ● ● ● ● ● ●	50
032-10-028TNC	Venturi Fixed Concentration Mask Set with Nose Clip + 2.1m O <sub>2</sub> Tube	● ○ ● ● ● ● ● ●	50
032-10-029	Venturi Fixed Concentration Mask Set with Blank Venturi Barrels	○ ○ ○ ○ ○ ○ ○ ○	50
032-10-030TNC	Venturi Fixed Concentration Mask with Nose Clip + 15cm Reservoir Tube + 2.1m O <sub>2</sub> Tubing	● ○ ● ● ● ● ● ●	50

### Venturi Fixed Concentration Mask Sets / Venturi Sets

ADULT VENTURI MASK + RESERVOIR TUBE	ADULT VENTURI MASK + O <sub>2</sub> TUBING	ADULT VENTURI MASK + RESERVOIR TUBE + O <sub>2</sub> TUBING	VENTURI BARREL ONLY	VENTURI BARREL + RESERVOIR TUBE	VENTURI COLOUR	QTY
032-10-040C	032-10-040T	032-10-040CT	034-10-026	034-10-026C	●	50
032-10-041C	032-10-041T	032-10-041CT	034-10-027	034-10-027C	○	50
032-10-048C	032-10-048T	032-10-048CT	034-10-032	034-10-032C	●	50
032-10-042C	032-10-042T	032-10-042CT	034-10-028	034-10-028C	●	50
032-10-043C	032-10-043T	032-10-043CT	034-10-029	034-10-029C	●	50
			034-10-030	034-10-030C	●	50

# Medium Concentration Masks

Soft and pliable mask that moulds easily to the patient's face, with a feathered-edge rim for excellent fit and seal to provide maximum comfort and efficacy.



## Patient Comfort

Knitted latex free strap maintains its width when stretched and reduces pressure on patients' skin, helping protect from pressure sores.

## Clear Observation of Face Colour and Vitals

Clear and colourless mask for quick and easy assessment of potential cyanosis.

## Soft and Flexible

The masks seals comfortably to the face without pressure points. Horizontal Gas Flow minimises irritation and drying of the eyes.

## Swivel Connector

The connector can be rotated to the most convenient and comfortable position, accommodating for patient movement and oxygen supply from either side.

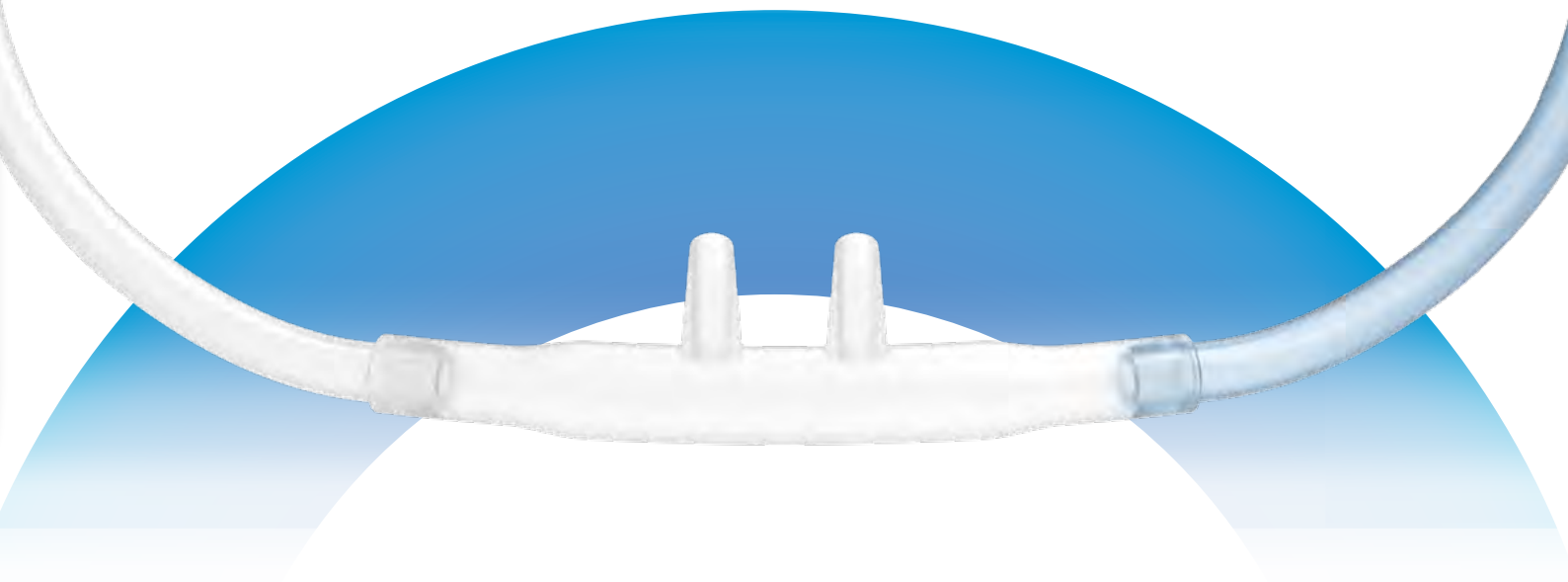
## Strap Options

Choose headstrap or earloops, ideal for patients with restricted head movement or find the strap behind the head uncomfortable.

## Stepped Oxygen Inlet

Quick, easy and secure connection to oxygen tubing.

ADULT	SMALL ADULT	PAEDIATRIC	DESCRIPTION	QTY
032-10-001	032-10-001SM	032-10-008	Medium Concentration Mask with Head Strap	50
032-10-001NC			Medium Concentration Mask with Nose Clip and Head Strap	50
032-10-002	032-10-002SM	032-10-009	Medium Concentration Mask with Head Strap and 2.1m Oxygen Tubing	50
032-10-002/1			Medium Concentration Mask with Head Strap and 3.0m Oxygen Tubing	50
032-10-002NC			Medium Concentration Mask with Nose Clip Head Strap and 2.1m Oxygen Tubing	50
032-10-002NCBV			Medium Concentration Mask with Nose Clip and 4.0m Oxygen Tubing	50
032-10-013			Medium Concentration Mask with Ear Loops	50
032-10-014			Medium Concentration Mask with Ear Loops and 2.1m Oxygen Tubing	50
032-10-014NC			Medium Concentration Mask with Nose Clip Ear Loops and 2.1m Oxygen Tubing	50



# Nasal Cannulas

Soft Touch Nasal Cannula for the delivery of low-flow supplemental oxygen. Flexible tubing minimises friction and pressure on the skin reducing the risk of tissue damage and pressure ulcers.



## Better Care with Reduced Costs

Soft Touch tubing minimises stresses on the ear and facial tissue, reducing the potential for skin breakdown and associated costs. Soft Touch tubing avoids the need for uncomfortable, bulky foam ear guards or cushions which can retain moisture and potentially become a reservoir for infection.

- + Improved Patient Compliance
- + Less Bulky than Ear Guards
- + Avoids Additional Treatment Costs

PART	DESCRIPTION	QTY
032-10-020	Adult Standard Prong Nasal Cannula	100
032-10-020FC	Adult Flared Curved Nasal Cannula	100
032-10-022	Adult Standard Prong Nasal Cannula with 2.1m Tubing	100
032-10-022FC	Adult Flared Curved Nasal Cannula with 2.1m Tubing	100
032-10-107	Adult Flared Tip Nasal Cannula	100
032-10-022/5	Adult Standard Prong Nasal Cannula with 5m Oxygen Tubing	100
032-10-022/10	Adult Standard Prong Nasal Cannula with 10m Oxygen Tubing	100
032-10-101	Adult Soft Tip Curved Nasal Cannula with 2.1m Tubing	100
032-10-102	Adult Soft Tip Curved Nasal Cannula	100
032-10-103	Paediatric Soft Tip Curved Nasal Cannula with 2.1m Tubing	100
032-10-104	Paediatric Soft Tip Curved Nasal Cannula	100
032-10-105	Neonatal Soft Tip Curved Nasal Cannula with 2.1m Tubing	100
032-10-106	Neonatal Soft Tip Curved Nasal Cannula	100
032-10-108	Adult Soft Tip Nasal Cannula for CO <sub>2</sub> Monitoring 3m Tubing with Male Luer	100
032-10-109	Adult Soft Tip Nasal Cannula with O <sub>2</sub> /CO <sub>2</sub> Combi Monitoring with 2.1m O <sub>2</sub> line, 3m monitoring line with Male Luer	100
032-10-114	Adult Soft Tip High Demand Nasal Cannula with 2.1m Tubing	100
032-10-115	Infant Soft Tip Nasal Cannula with 2.1m Tubing	100
032-10-116	Premature Soft Tip Nasal Cannula with 2.1m Tubing	100

# Non-Rebreathing Mask

The first choice for high oxygen concentration delivery to spontaneously breathing patients in an acute medical emergency. One way valves on mask minimise room air entrainment ensuring patient receives highest levels of oxygen. Available with a safety port to facilitate room air entrainment into mask if oxygen supply becomes blocked, allowing the patient to breathe normally.

## Reduced Risk of Patient Trauma

Elasticated earloop option on the adult mask eliminates the need for the patient's head to be moved to fit the mask, reducing risk of further injury.

## Reduced Risk of Bag Occlusion

Castellations on the swivel connector ensures flow of oxygen from bag to patient is uninterrupted.

## Ease and Speed of Fitting

Mask is fitted quickly and easily with the swivel connector rotated to suit the patient's position.



ADULT	PAEDIATRIC	DESCRIPTION	QTY
032-10-071		Non Rebreathing Mask with Ear Loops	50
032-10-070		Non Rebreathing Mask with Ear Loops and 2.1m Oxygen Tubing	50
032-10-073	032-10-081	Non Rebreathing Mask with Head Strap	50
032-10-072	032-10-080	Non Rebreathing Mask with Head Strap and 2.1m Oxygen Tubing	50
032-10-073NC		Non Rebreathing Mask with Nose Clip and Head Strap	50
032-10-072NC		Non Rebreathing Mask with Nose Clip Head Strap and 2.1m Oxygen Tubing	50
032-10-072NCSTR		Non Rebreathing Mask with Nose Clip Head Strap and 2.1m Oxygen Tubing Sterile	50
032-10-078	032-10-084	Non Rebreathing Mask with Safety Port Head Strap and 2.1m Oxygen Tubing	50
032-10-078NC		Non Rebreathing Mask with Safety Port Nose Clip Head Strap and 2.1m Oxygen Tubing	50
032-10-076		Non Rebreathing Mask with Safety Port Ear Loops and 2.1m Oxygen Tubing	50



## Tracheostomy Mask

Contoured for an effective seal and a 360° swivel connector for maximum patient comfort. The 22mm connector fits to corrugated tubing and can deliver humidified oxygen when used with a venturi and humidity adaptor.

PART	DESCRIPTION	QTY
032-10-091	Adult Tracheostomy Mask	50
032-10-092	Paediatric Tracheostomy Mask	50

# Bubble Humidifier

Safe and easy to use active humidification, recommended when oxygen is delivered in excess of 4 l/min.



## Increased Humidification

The fine diffuser at the inlet tube end produces very small gas bubbles that maximise the surface area, providing increased humidification with a low noise level, reducing patient disruption.

## Safety Pressure Relief Valve

Pressure relief valve automatically opens at 6psi or 4psi should the outlet line become occluded.

## PVC Nipple Diffuser

For home use, the PVC nipple diffuser extends the life of the humidifier and minimises risk of blockage.

PART	DESCRIPTION	QTY
032-10-089	Bubble Humidifier 400ml with Fine Diffuser and 4psi Safety Valve For Hospital Use	20
032-10-090	Bubble Humidifier 200ml with 6psi Safety Valve For Home Use	20



## Oxygen Tubing Connectors

PART	DESCRIPTION	QTY
032-10-117	Oxygen Tubing T Connector	25
032-10-118	Oxygen Tubing Right Angled Connector	25
032-10-119	Oxygen Tubing Straight Connector	25
032-10-110	Oxygen Tubing Swivel Connector	25
032-10-111	Oxygen Tubing Swivel Connector with Clip	25
032-10-112	Oxygen Flow Meter Barbed Connectorr	25



## Oxygen Tubing

PART	DESCRIPTION	QTY
032-10-059	Star Lumen Oxygen Tubing 100m	1
032-10-060	Star Lumen Oxygen Tubing 2.1m with Standard Connectors	100
032-10-063	Star Lumen Oxygen Tubing 2.1m with One Standard and One Fit-All Universal Connector	100
032-10-067	Oxygen Tubing 30m Bubble Type 3mm ID	1
032-10-068	Oxygen Tubing 100m Bubble Type 3mm ID	1
032-10-069	Oxygen Tubing 1.8m Bubble Type 3mm ID	100

# MaxiNeb® Duo

A high performing, dual mode nebuliser which provides the clinician and patient with the ability to instantly switch between patient controlled or continuous treatment, improving patient comfort, increasing caregiver and surrounding environment safety and reducing medicine wastage.




**Patient Controlled Mode**

Press/release the trigger to start/stop the treatment.



**Continuous Mode**

Press the trigger and engage the snap lock for continuous treatment.

## Unique Design

Unique valve and filter design reduces medicine wastage. The patented dual mode improves patient comfort with the ability to switch between continuous or patient controlled treatment.

## Expiratory Filter

Bacterial/Viral filter reduces the expiration of the aerosolised medicine, trapping bacteria and viruses reducing the risk of cross contamination and protecting caregivers and the clinical environment against aerosol inhalation.

## Breath Enhanced Technology

When the patient inhales, the unique design of MaxiNeb Duo allows more air to enter the nebuliser, speeding up the circulation of the mist, enabling the treatment to immediately pass to the patient.

ADULT	PAEDIATRIC	DESCRIPTION	QTY
032-10-038		Maxineb Duo Nebuliser, Mouthpiece and Tubing	50
032-10-039		Maxineb Duo Nebuliser, Mouthpiece, Tubing and Filter	50
032-10-142		Maxineb Duo Nebuliser, Mouthpiece, Tubing and PEP Cap	50
032-10-143		Maxineb Duo Nebuliser, Mouthpiece, Tubing Filter and PEP Cap	50
032-10-056	032-10-087	Maxineb Duo Closed System Mask	50
032-10-046	032-10-083	Maxineb Duo Nebuliser With Closed System Mask, Tubing and Filter	50
032-10-049	032-10-085	Maxineb Duo Nebuliser With Closed System Mask, Tubing, Filter and Mouthpiece	50
032-10-035		Maxineb Duo Filter	50

# MaxiNeb® Nebulisers

Intended to convert suitable liquid medication into a mist of fine particles for inhalation by a patient with the intent that the particles be deposited directly into the lower airway. MaxiNeb nebulisers have a low Dead Volume, short nebulising time, optimal MMAD and high percentage of aerosol mass in the Respirable Range.



### MaxiNeb

MaxiNeb is a high output nebuliser which delivers medication quickly and efficiently.



### MaxiNeb 90

Features all the benefits of MaxiNeb, but functions at angles up to 90°, making MaxiNeb 90 ideal for recumbent patients.

### Patient Choice

Attaches to either an aerosol mask, mouth piece or T-Piece, for a wide choice of delivery options.

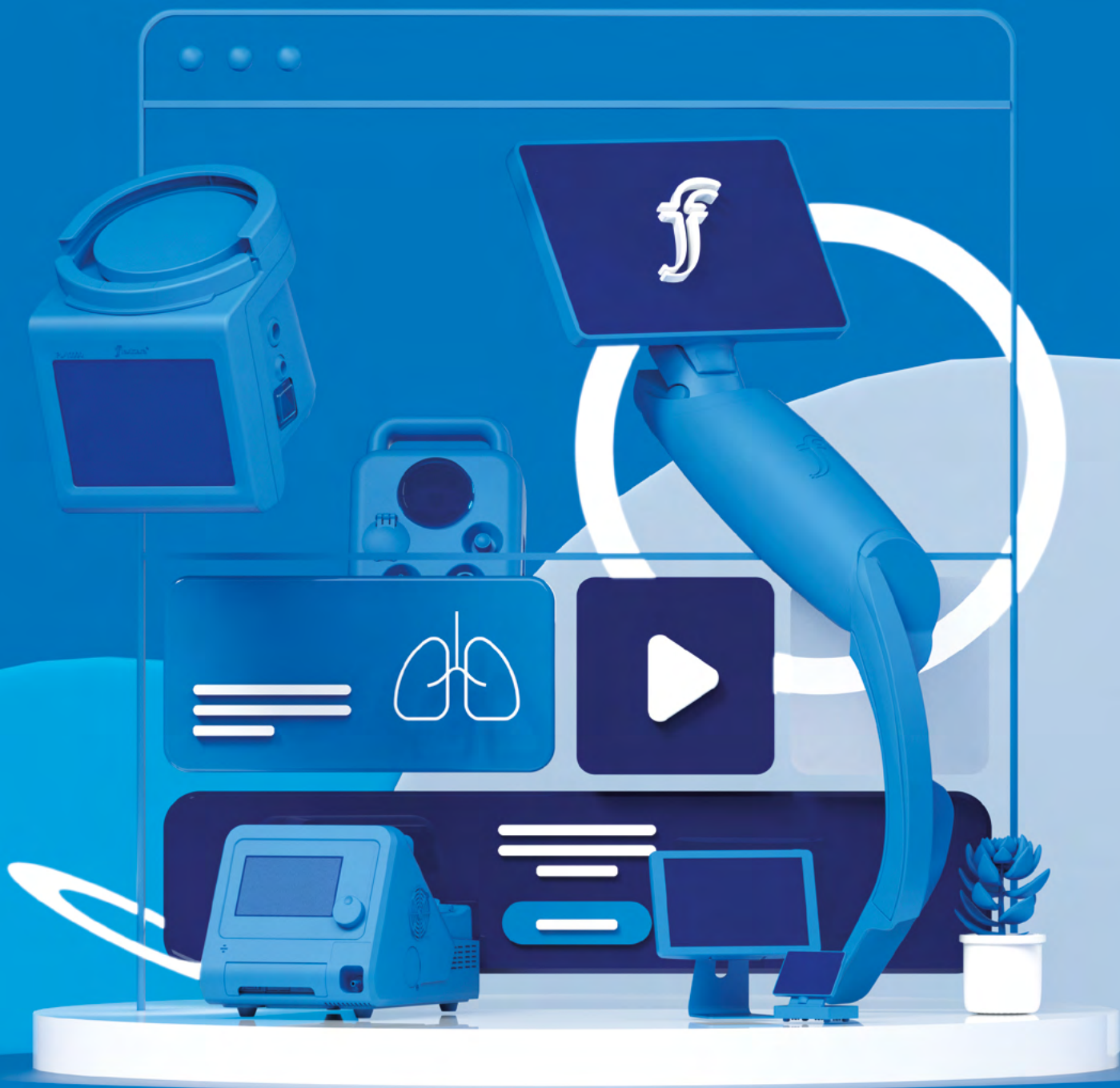
### Anti-Spill Design

Easy ¼ turn cap creates a secure leak-proof seal and the wide tripod legs keeps MaxiNeb stable and upright, even on uneven surfaces.

### Clear Chamber

Graduations aid drug dilution and monitoring the nebulisation process through to completion.

MAXINEB	MAXINEB 90	DESCRIPTION	QTY
032-10-003	032-10-015	MaxiNeb Nebuliser	50
032-10-004		MaxiNeb Nebuliser with T-Piece and Mouthpiece	50
032-10-004A		MaxiNeb Nebuliser with T-Piece	50
032-10-005	032-10-019	MaxiNeb Nebuliser with T-Piece Mouthpiece and 2.1m Oxygen Tubing	50
032-10-005C		MaxiNeb Nebuliser with T-Piece Mouthpiece with 0.15m Corrugated and 2.1m Oxygen Tubing	50
032-10-007	032-10-016	MaxiNeb Nebuliser, Adult Aerosol Face Mask with and 2.1m Oxygen Tubing	50
032-10-007NC	032-10-016NC	MaxiNeb Nebuliser, Adult Aerosol Face Mask with Nose Clip and 2.1m Oxygen Tubing	50
032-10-011	032-10-017	MaxiNeb Nebuliser, Paediatric Aerosol Mask and 2.1m Oxygen Tubing	50
	032-10-018A	MaxiNeb Nebuliser, Neonatal Aerosol Mask and 2.1m Oxygen Tubing	50





---

Discover more online. Visit our website for the very latest product releases, instructional videos, company news, event information and downloadable resources.

Subscribe to our social media channels to join the conversation and share your stories.

**[www.flexicare.com](http://www.flexicare.com)**



flexicaremedical



flexicaremed



Flexicare Group Limited



flexicaremedical



flexicaremedical



**Flexicare Group Limited**

Cynon Valley Business Park • Mountain Ash • CF45 4ER • UK  
+44 (0)1443 474647 • enquiries@flexicare.com

[www.flexicare.com](http://www.flexicare.com)

FC7087A | 112022